

## PRO SERIES

# BUZZER-BEATER

## ENZYME ENRICHED FLOOR CLEANER

LA ENZIMA ENRIQUECIÓ EL LIMPIADOR DEL PISO

### Technical Data

#### Areas of Use

- Food Service Areas
- Schools
- Hotels
- Hospitals
- Restrooms
- Shower Rooms

#### Specifications

SSS Item Numbers	.....48192, 48100
Available Sizes	.....64 Oz., 1G
Physical State	.....Liquid
Active Ingredients	.....15.0 + 0.5%
Color	.....Green, Slight hazy
Fragrance	.....Potpourri
Base	.....Detergent Blend
pH	.....9.0 - 10.0
Viscosity	.....Water thin
Foam	.....Moderate
Abrasive	.....None
Phosphate	.....None
Solubility	.....Complete with water
Emulsification	.....Excellent
Detergency	.....Excellent
Rinsability	.....Excellent
Flash Point	.....None
Biodegradability	.....Complete
Storage/Stability	.....1 year
Weight Per Gallon	.....8.76 lbs./gal.
Freeze/Thaw Stability	.....Keep from freezing

#### HMIS Hazardous Materials I.D. System

Health	.....1
Flammability	.....0
Reactivity	.....0
Personal Protection	.....B

#### What the Pros Know

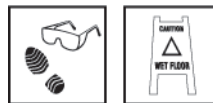
After floor cleaning, bacterial action will work on mop heads to keep them from developing a sour mop odor.

#### Description

This product is a high performance, bacterial-enriched floor cleaner, odor eliminator, and grease digester with a pleasant potpourri scent. It is recommended for use in food service areas, schools, hotels, hospitals, restrooms, and shower rooms. No rinse is required. The unique chemistry provides bleaching action that brightens surfaces as it cleans and leaves surfaces sparkling clean with a pleasant scent. It is ideal for cleaning concrete, ceramic tile, quarry tile, grout and brick and rubber mats with floor machine or mopping. Inherent biological action continues to clean between regularly scheduled cleanings to help keep grease accumulations to minimum.

#### Directions

Wear safety equipment recommended on SDS, place Wet Floor Signs and read all directions and cautions prior to beginning your work.



May be applied with automatic scrubber, mop, brush, pump-up sprayer or pressure washer.

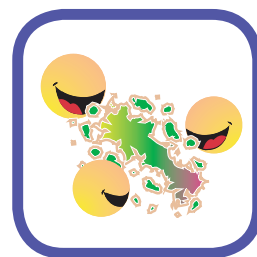
**(FOR LIGHT DUTY CLEANING AND FLOOR MAINTAINING)** Dilute 1 to 2 ounces of product per gallon of water. Rinse with clean water as needed.

**(FOR MEDIUM DUTY FLOOR CLEANING)** Dilute 3 to 4 ounce of product per gallon of water. Rinse thoroughly with clean water.

**(FOR GREASE, OIL AND OTHER HEAVY DUTY FLOOR CLEANING)** Dilute 6 to 8 ounce of product per gallon of water. Rinse thoroughly with clean water.

Apply product by spray, mop, sponge or automatic scrubber to surfaces to be cleaned. If necessary, agitate to help remove excessive soils. Rinse thoroughly with clean water as needed.

These directions are flexible rather than specific. In many cases a more dilute solution can be used, while for extreme conditions a less dilute solution may be used.



*Bacterial  
Enriched*

*Biological Action  
Continues to  
Clean Between  
Scheduled  
Cleanings*

*No Rinse  
Required*

